

# **FISHER & PAYKEL**

## **INTEGRATED INSERT RANGEHOOD**



**CONTEMPORARY**

HP60IHCB4 and HP90IHCB4 models

**INSTALLATION GUIDE**

**UK IE EU**

**⚠ WARNING!**



**Electric Shock Hazard**

Failure to follow this advice may result in electric shock or death.

- Installation and electrical wiring must be completed by qualified person(s) in accordance with all applicable codes and standards, including fire-rated construction.
- Always disconnect the appliance from the mains power supply before carrying out any maintenance or repairs.

**⚠ WARNING!**



**Weight Hazard**

Failure to follow this advice may result in damage or personal injury.

- The appliance is heavy. Please ensure adequate care is taken when installing the appliance.
- **Product weight:** 9kg (HP60) and 11kg (HP90).

**⚠ WARNING!**



**Cut Hazard**

Failure to use caution could result in injury.

- Take care: some edges are sharp.
- Wear gloves to protect against sharp edges.

**⚠ WARNING!**



**Fire Hazard**

Failure to follow this advice may result in serious burns or death.

- Never leave surface units unattended at high settings. Boilovers cause smoking and greasy spillovers that may ignite. Heat oils slowly on low or medium settings.
- Do not vent exhaust air into spaces within walls or ceilings or into attics, crawl spaces, or garages.
- Always turn hood ON when cooking at high heat or when flambéing food.
- Clean ventilating fans frequently. Grease should not be allowed to accumulate on fan or filter.
- Use proper pan size. Always use cookware appropriate for the size of the surface element.

**READ AND SAVE THESE INSTRUCTIONS**

**WARNING!**

When using this appliance always exercise basic safety precautions including the following:

Installation

- Please read the entire set of instructions before installing or using this appliance.
- Please make this information available to the person installing the appliance - doing so could reduce your installation costs.
- Always switch the power off prior to installation, servicing or cleaning of the appliance.
- This appliance must be installed and connected to the mains power supply only by a suitably qualified person according to these installation instructions and in compliance with any applicable local building and electricity regulations. Failure to install the appliance correctly could invalidate any warranty or liability claims.
- To comply with electrical safety regulations, the appliance must be plugged into a socket near the appliance. The socket must be accessible, or have an accessible isolating switch, to enable the end user to isolate the appliance from the power for the purpose of internal cleaning or maintenance.
- A power outlet should be within 750 mm of the rangehood and can either be in the cabinetry, above the cabinetry or in the ceiling.
- If the supply cord of this equipment is damaged, it must only be replaced by the manufacturer, its service agent or similarly qualified person in order to avoid a hazard.
- All ducting must comply with local requirements and building codes.

## SAFETY AND WARNINGS

---

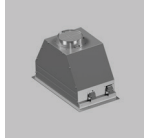
- Attention should be given to ensure that any applicable regulations concerning the discharge of exhaust air are fulfilled.
- To reduce risk of fire and to properly exhaust air, be sure to duct air outside—Do not vent exhaust air into spaces within walls or ceilings or into attics, crawl spaces, or garages.
- Before connecting any pipes, consult municipal ordinances to ensure that any applicable regulations concerning the discharge of exhaust air are adhered to and request permission from the person in charge of the building.
- To reduce the risk of damage occurring to the cooktop, it is recommended that the surface of the cooktop is protected with cardboard or a similar object during installation of the rangehood.
- This unit must be earthed/grounded. Improper earthing/grounding can result in a risk of electric shock.
- In order to avoid a hazard due to inadvertent resetting of the thermal cut-out, this appliance must not be supplied through an external switching device, such as a timer, or connected to a circuit that is regularly switched on and off by the utility.
- When cutting or drilling into wall or ceiling, do not damage electrical wiring and other hidden utilities.
- Failure to install the screws or fixing device in accordance with these instructions may result in electrical hazards.
- Exhaust air must not be discharged into an existing flue that is used for exhausting fumes from appliances burning gas or other fuels.
- Rangehoods may affect the safe operation of appliances burning gas or other fuels (including those in other rooms) due to backflow of combustion gases. These gases can potentially result in carbon monoxide poisoning. Ensure there is adequate ventilation of the room when the rangehood is used at the same time as appliances burning gas or other fuels. After installation of a rangehood the operation of flued gas appliances should be tested by a competent person to ensure that backflow does not occur.
- In order to avoid a hazard due to inadvertent resetting of the thermal cut-out, this appliance must not be supplied through an external switching device, such as a timer, or connected to a circuit that is regularly switched on and off by the utility.
- The minimum distance between the supporting surface for the cooking vessels on the hob and the lowest part of the rangehood. (When the rangehood is located above a gas appliance, this distance shall be at least 650mm. If the instructions for installation for the gas hob specify a greater distance, this has to be taken into account. The distance of 65 cm can be reduced for
  - non-combustible parts of rangehoods, except grease filters, and/or
  - parts operating at safety extra low voltage, provided these parts do not give access to live parts if deformed).

# COMPONENTS REQUIRED

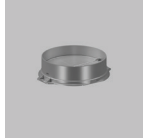
## PARTS

- Keep all packing materials until the unit has been inspected.
- Inspect the product to ensure there is no shipping damage. If any damage is detected contact the dealer or retailer you bought the product from to report the damage.
- Fisher & Paykel is not responsible for shipping damage.

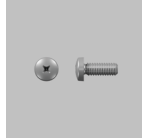
### Supplied



Rangehood (1)



150mm outlet (1)



Phillips screws (2)



Safety guide (1)



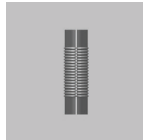
Warranty guide (1)

### Not supplied

#### Recirculation Installation



793599 Carbon filter (2)

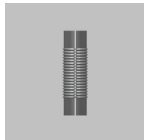


Ducting 150mm dependant on outlet location (1)\*



Internal grill (1)

#### Duct out Installation



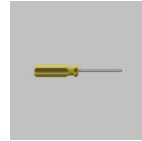
Ø150mm rigid or semi-rigid ducting (1)\*length dependant on installation



Duct outlet (Soffit, wall, roof) (1)

## TOOLS

### Not supplied



Phillips screwdriver (1)



Duct tape (1)



Electric drill (1)



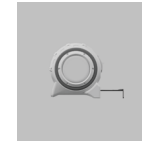
Jigsaw (1)



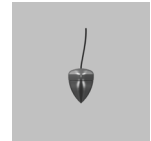
Pencil (1)



Ruler (1)



Tape measure (1)

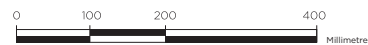
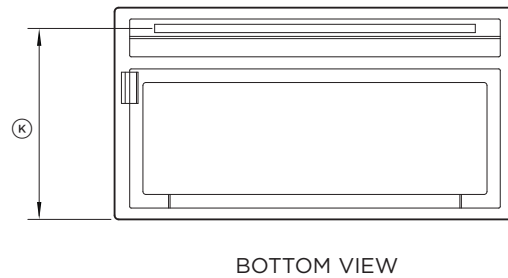
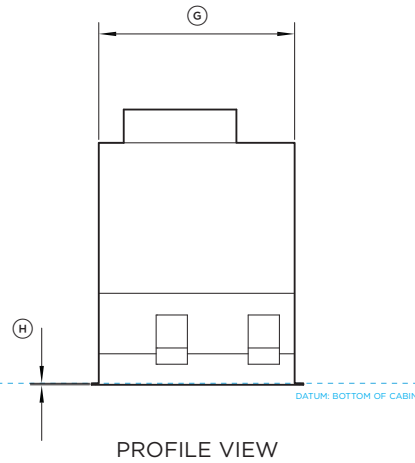
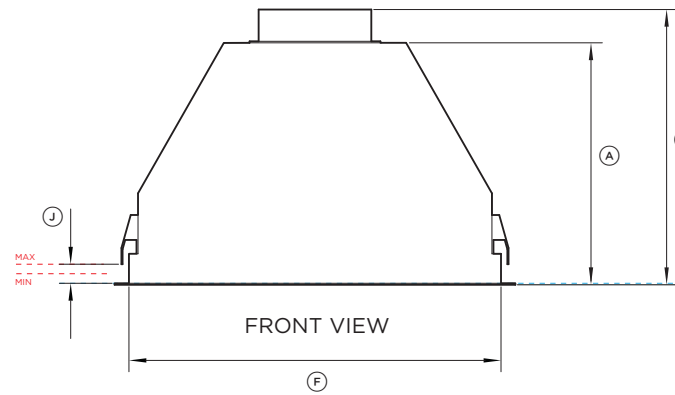
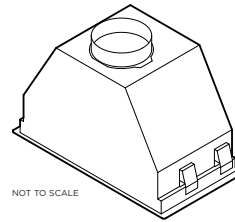
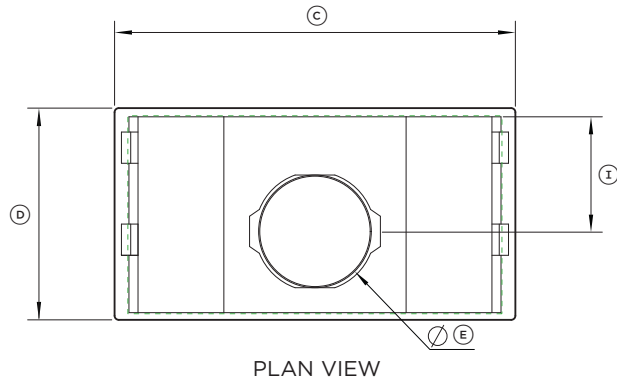


String & weight (1)



Straps (1)

# PRODUCT DIMENSIONS | HP60IHCB4



| Product Dimensions   | mm               |
|--|------------------|
| Ⓐ Overall height of rangehood without ducting adapter                                  | 316              |
| Ⓑ Overall height of rangehood with ducting adapter                                     | 361              |
| Ⓒ Overall width of rangehood   | 530              |
| Ⓓ Overall depth of rangehood (excl. cabinetry front panel)                             | 280              |
| Ⓔ Diameter of ducting adaptor  | 150              |
| Ⓕ Width of rangehood chassis   | 492              |
| Ⓖ Depth of rangehood chassis   | 258              |
| Ⓜ Thickness of flange  | 2                |
| Ⓣ Distance from ducting outlet centre to rear of chassis                               | 152              |
| Ⓝ Height adjustability of clip that secures cooker hood (cabinet base panel thickness) | min 15<br>max 40 |
| Ⓚ Distance from rear to centre of light  | 253              |

| Cavity Dimensions Standard Installation | mm  |
|---|-----|
| Width of cutout                         | 500 |
| Depth of cutout                         | 260 |

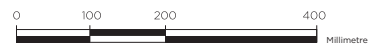
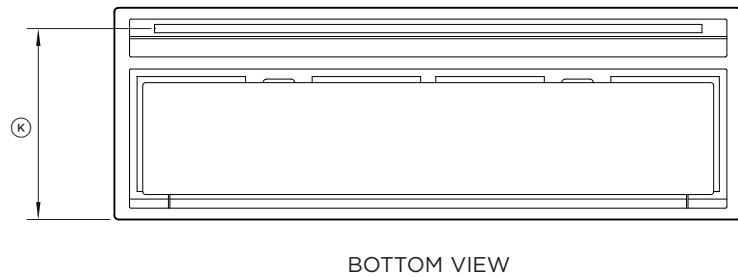
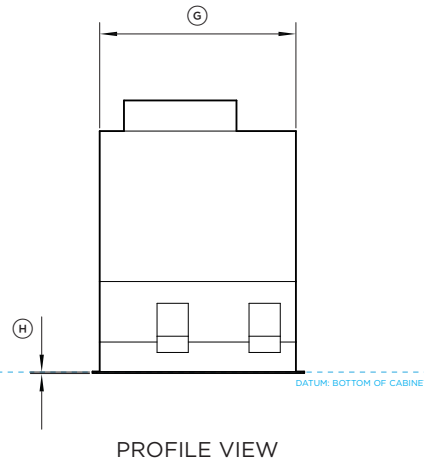
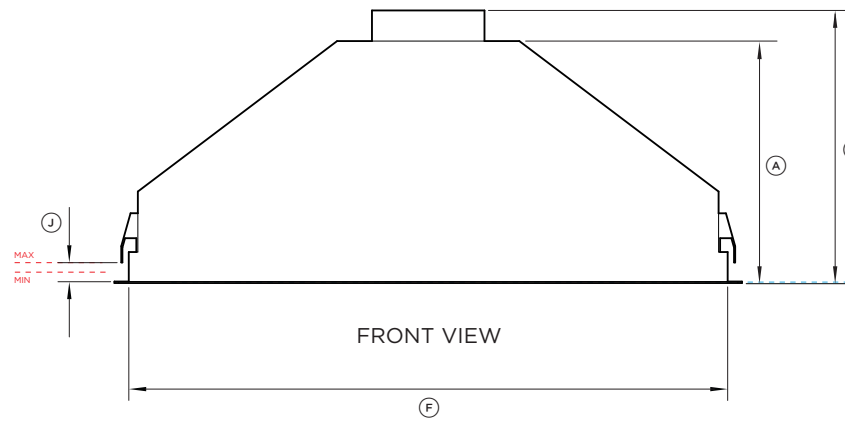
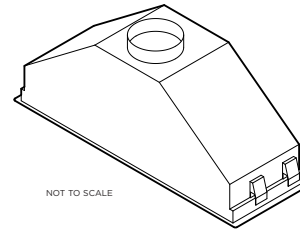
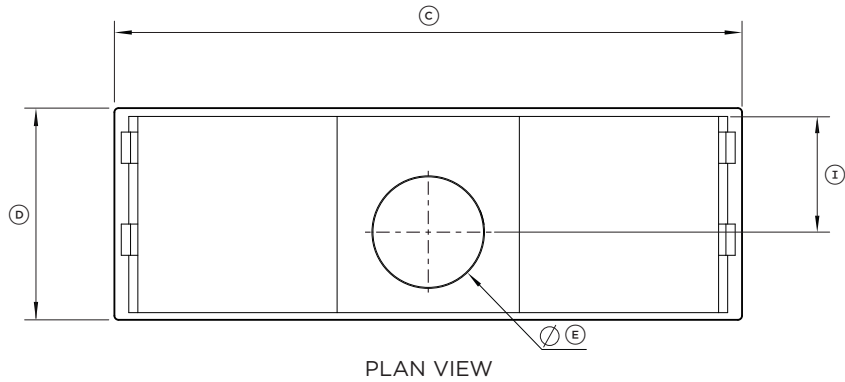
| Minimum distance above cooktops                                | mm  |
|--|-----|
| Minimum height from top of electric cooktop to base of product | 600 |
| Minimum height from top of gas cooktop to base of product      | 650 |

Minimum height may be greater if required by your cooktop. Refer to cooktop installation guide for details.

Note: We recommend the cabinet has a door or service panel that can be easily opened to access the power connection.

INDICATES CUTOUT -----  
 INDICATES PRODUCT DATUM -----  
 INDICATES CABINERY CLEARANCES -----

# PRODUCT DIMENSIONS | HP90IHCB4



| Product Dimensions   | mm               |
|--|------------------|
| Ⓐ Overall height of rangehood without ducting adapter                                  | 316              |
| Ⓑ Overall height of rangehood with ducting adapter                                     | 361              |
| Ⓒ Overall width of rangehood   | 830              |
| Ⓓ Overall depth of rangehood (excl. cabinetry front panel)                             | 280              |
| Ⓔ Diameter of ducting adaptor  | 150              |
| Ⓕ Width of rangehood chassis   | 792              |
| Ⓖ Depth of rangehood chassis   | 258              |
| Ⓜ Thickness of flange  | 2                |
| Ⓣ Distance from ducting outlet centre to rear of chassis                               | 152              |
| Ⓝ Height adjustability of clip that secures cooker hood (cabinet base panel thickness) | min 15<br>max 40 |
| Ⓢ Distance from rear to centre of light  | 253              |

| Cavity Dimensions Standard Installation | mm  |
|---|-----|
| Width of cutout                         | 800 |
| Depth of cutout                         | 260 |

| Minimum distance above cooktops                                | mm  |
|--|-----|
| Minimum height from top of electric cooktop to base of product | 600 |
| Minimum height from top of gas cooktop to base of product      | 650 |

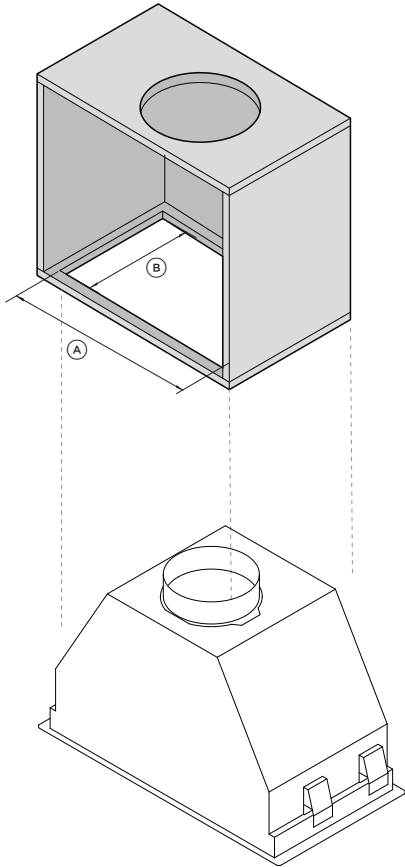
Minimum height may be greater if required by your cooktop. Refer to cooktop installation guide for details.

Note: We recommend the cabinet has a door or service panel that can be easily opened to access the power connection.

INDICATES CUTOUT -----  
 INDICATES PRODUCT DATUM -----  
 INDICATES CABINETRY CLEARANCES -----

## CUTOUT DIMENSIONS

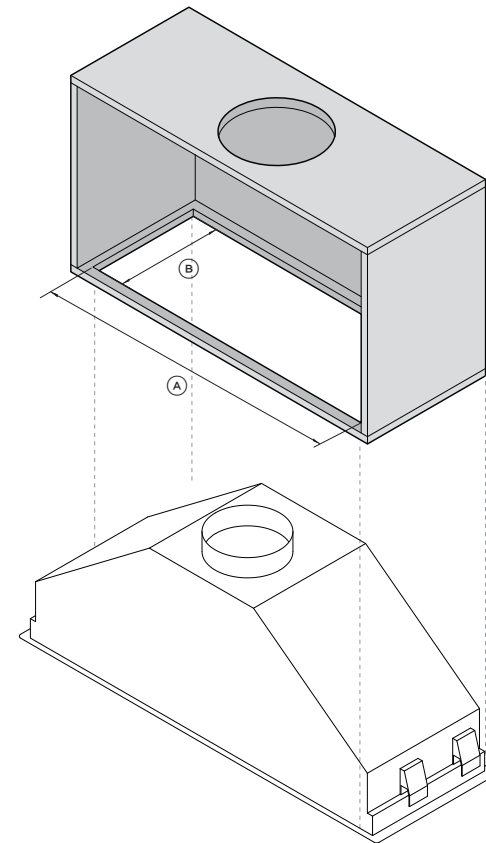
### 60CM MODELS



#### CUTOUT DIMENSIONS

|                               | <b>HP60</b> |
|-------------------------------|-------------|
|                               | <b>MM</b>   |
| Ⓐ Overall width of the cutout | 500         |
| Ⓑ Overall depth of the cutout | 260         |

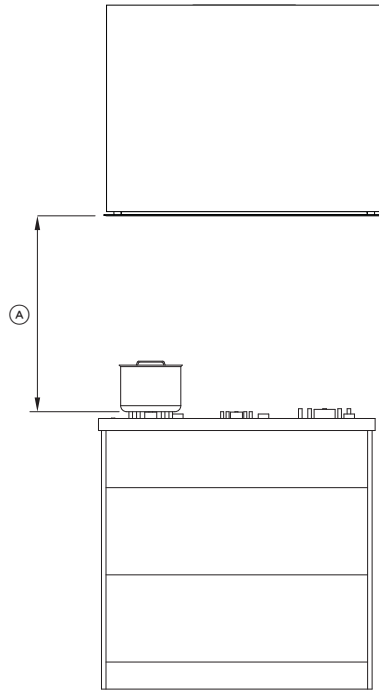
### 90CM MODELS



#### CUTOUT DIMENSIONS

|                               | <b>HP90</b> |
|-------------------------------|-------------|
|                               | <b>MM</b>   |
| Ⓐ Overall width of the cutout | 800         |
| Ⓑ Overall depth of the cutout | 260         |

## INSTALLATION HEIGHT



### HEIGHT DIMENSIONS

MM

Ⓐ Height top of cooktop to base of product

- from electric cooktop
- from gas cooktop

min 600  
min 650

This rangehood must be installed no lower than the minimum height indicated in the table above. Minimum installation height may be greater if required by the cooktop, refer to your cooktop installation instructions.

Installation at the minimum height will improve the efficiency of capturing cooking odours, grease and smoke.

### Induction cooktop considerations

- Induction cooktops use energy efficient technology that only heats the contents of a cooking pot.
- Unlike gas or traditional electric cooktops, the surrounding air does not get heated when using an induction cooktop. As a result, rangehood filters, splashbacks and surrounding cabinetry do not get warmed up, increasing the likelihood of condensation on these cooler surfaces.
- Other factors like ambient temperature, humidity, natural ventilation of the room, size of the cookware and how the induction cooktop is being used also influence condensation. For example, aggressive boiling on high cooktop heat settings like PowerBoost increases the rate at which water is evaporated, increasing the likelihood of condensation.
- It is important to understand that neither the rangehood nor the induction cooktop are faulty as a result of this phenomenon.

### Condensation can be minimised by:

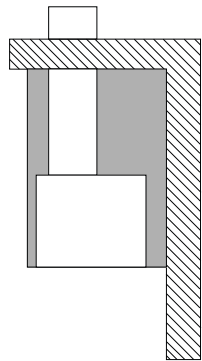
- Using the rangehood on a lower speed setting when boiling.
- Using the induction cooktop on a lower heat setting when boiling.
- Switching the rangehood on 5 minutes before cooking and letting it run for at least 5 minutes after cooking. Refer to the 'your user guide for details of how to use the timer function.
- NOTE: recirculation does not remove moisture.



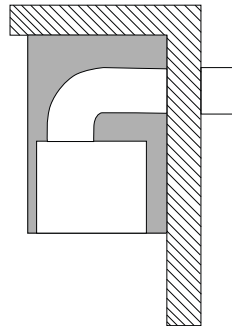
## VENTING REQUIREMENTS

Attention should be given to ensure that any applicable regulations concerning the discharge of exhaust air are fulfilled.

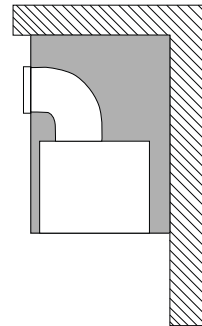
### Vent installation types:



Vent through roof



Vent through exterior wall



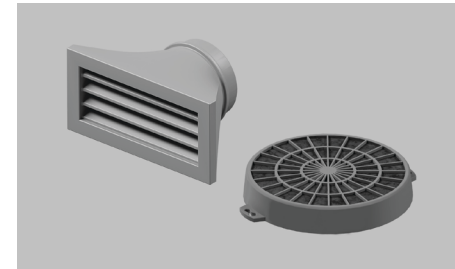
Recirculate with carbon filters

## ELECTRICAL REQUIREMENTS

Before connecting the rangehood to the power supply, ensure the voltage and frequency indicated on the rating plate match that of the installation location:

| MODEL                   | FREQUENCY | VOLTAGE     |
|-------------------------|-----------|-------------|
| HP60IHCB4,<br>HP90IHCB4 | 50 Hz     | 220 - 240 V |

## INSTALL PREPARATION / CONSIDERATIONS



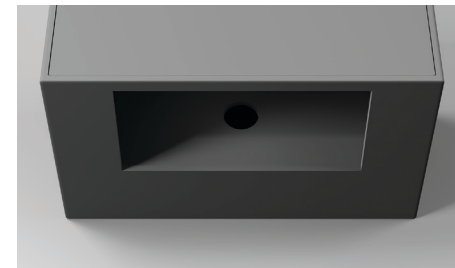
①

**Recirculation installations only:**  
Additional accessories required:  
Recirculation outlet.  
Carbon filters.



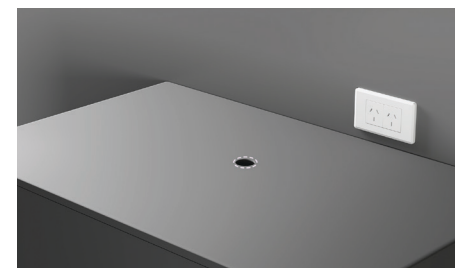
②

**Ducting options:**  
Duct to roof and out external wall or soffit.  
Duct to external wall and out.



③

Ensure the cavity is set up to the correct specifications. Refer to 'cutout dimensions' for details.

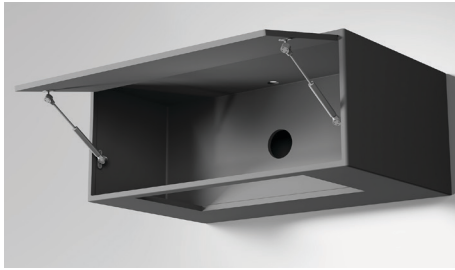


④

Ensure access for the one power connection has been considered and is accessible to the customer.

## INSTALL PREPARATION / CONSIDERATIONS

5



Ensure the top of the rangehood remains accessible via the cavity throughout the installation.

6



Refer to cooktop specifications to ensure adequate clearances are maintained.

## CHECK MATERIALS AND PARTS

1



Ensure the ducting is the correct length and compatible to the rangehood.

## UNPACK PRODUCT

1



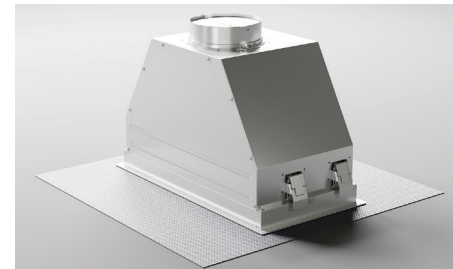
Open carton and remove all packaging. Carefully lift the products out of the cartons. Place on a protected surface.

2



Dispose of packaging responsibly. Recycle where possible.

3



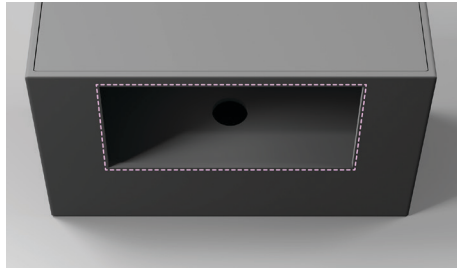
Inspect product for any damage. Connect to power and test.

## PREPARE CABINTRY

Ensure the cabinetry can support the weight of the rangehood and ducting.

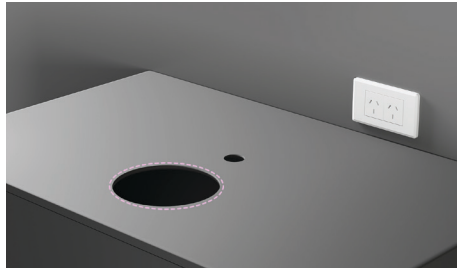
### NON PRECUT CABINTRY

①



Centre rangehood over cooktop and prepare cutout to the required specifications. Refer to dimensions and cabinetry cutout pages.

②



Prepare the ducting route.

### PRECUT CABINTRY

①



Prepare the ducting route.

## RECIRCULATION INSTALLATION

- Not relevant for ducting options.
- Venting directly into the cabinet with no ducting and louvered vent is not permitted.
- Note: Placement of the louvered vent on the top of your cabinetry is not recommended. This should only be done if objects can be prevented from falling through the louvers into the blower.

①



Determine the desired location of the 150mm vent on your cabinetry.

The vent can be placed on the side or front of your cabinet provided there is sufficient clearance from the surrounding cabinetry to enable ventilated air to recirculate back into your kitchen.

②



Create a cutout in your cabinet to fit the 150mm vent. Place the vent on the hole created and secure.

Note that shapes and sizes of louvered vents can vary. Refer to the vent selected for details.

③



Connect the blower outlet to the vent with a length of 150mm rigid or semi-rigid ducting, and secure the joints with aluminium tape.

Ensure there is no slack in the ducting.

# INSTALL DUCTING

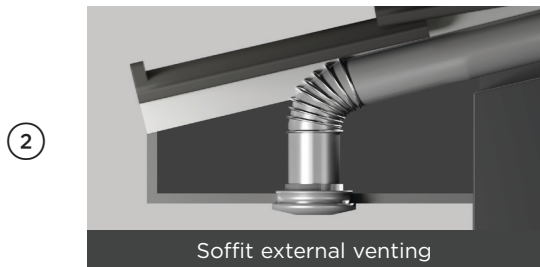
## RIGID DUCTING

- Not relevant for recirculation installation.
- Vent representative in the following rigid ducting steps.



Ensure the ducting is the correct length and size for your rangehood and that all required bends are present.

Do not reduce the duct diameter as this will increase noise.



Soffit external venting

**Install external venting as required:**

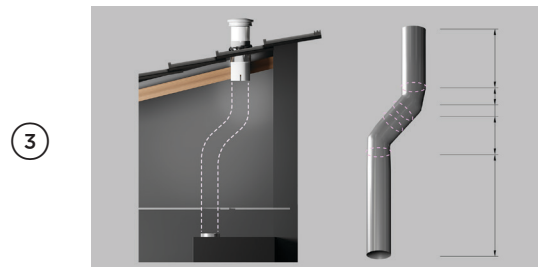
Weather proofing requirements depend on the cladding/roofing type.



Wall external venting



Roof external venting



③

Cut ducting to length.



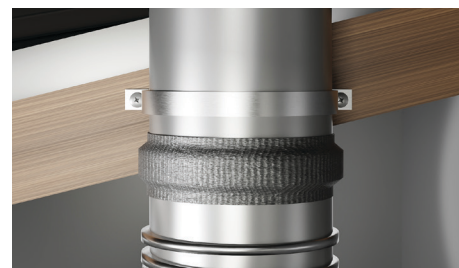
④

Route ducting and assemble.



⑤

Tape ducting to seal.



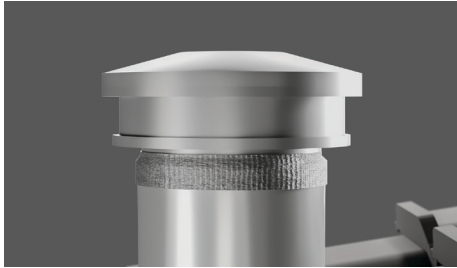
⑥

If required, secure ducting within ceiling.

## INSTALL DUCTING

### RIGID DUCTING

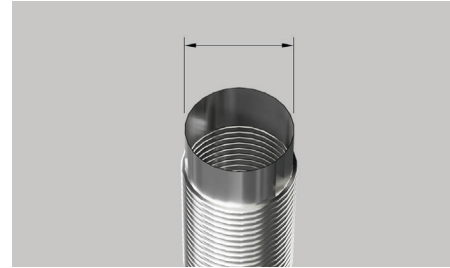
7



Fit ducting to the external vent and secure.

### SEMI-RIGID DUCTING

1



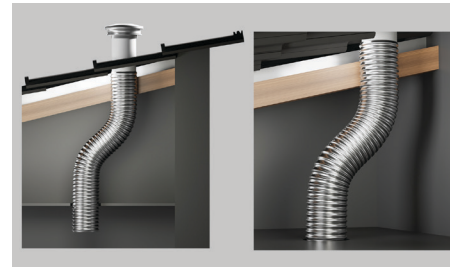
Extend the ducting to ensure it is the correct length and compatible to the rangehood.

2



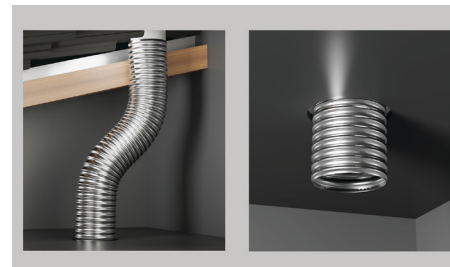
Install external venting as required. Weather proofing requirements depend on the cladding/roofing type. Options for external venting include soffit, wall or roof.

3



Route ducting and assemble.

4



Ensure ducting is not loose, kinked or crushed.

## INSTALL DUCTING

### SEMI-RIGID DUCTING

①



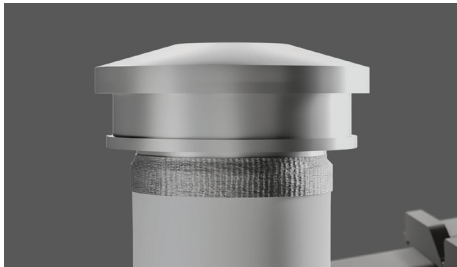
Seal ducting to external outlet.

②



If required, secure ducting within ceiling.

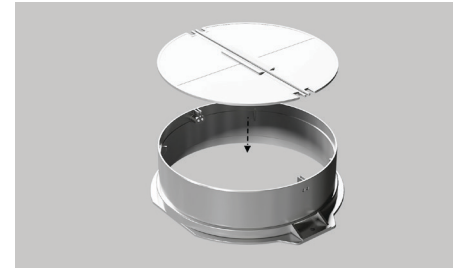
③



Fit ducting to the external vent and secure.

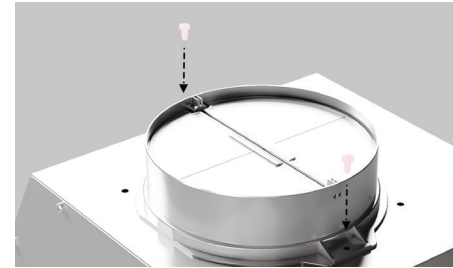
## PREPARE HOOD

①



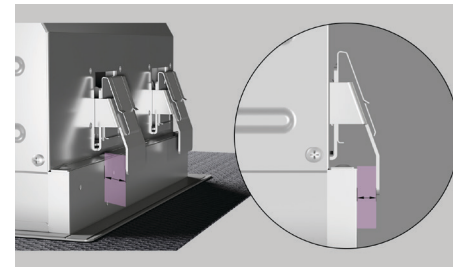
Slot non-return valves into the adapter and ensure they fold upwards and move freely when installed.

②



Fit the duct adapter to the rangehood using two supplied Phillips screws.

③



Ensure that there is an air gap between the mounting brackets and the hood chassis. The mounting brackets can be adjusted to achieve this if needed.

## INSTALL HOOD

①



Lift rangehood into cavity until all four mounting brackets clip in. Check brackets have safely engaged on the cabinetry before releasing rangehood. Ensure power cable remains free and unobstructed during this process.

②



Unclip filters to remove.

③



On one side of the perimeter plate, loosen the two screws shown, and slide perimeter plate out.

④



From below the rangehood, secure all four brackets using Phillips screwdriver. Tighten screws until flange is flush against the cabinetry.

⑤



Refit perimeter plate and secure using the screws removed in step 3.

⑥



Ensure filters are oriented correctly before clipping back into place.

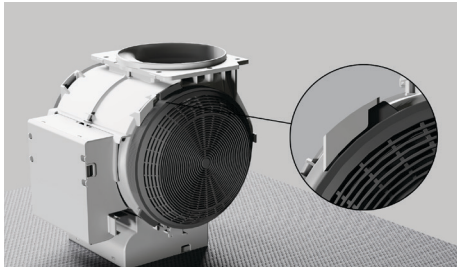
## SECURE DUCTING

①



Attach ducting to adapter.  
Secure using tape, cable ties or metal straps as required.

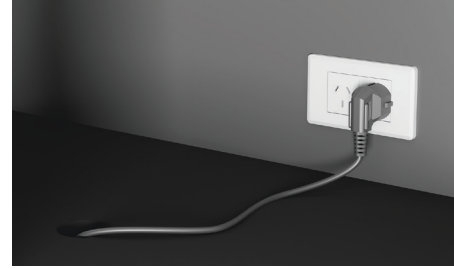
②



**Recirculation only:**  
Install the carbon filters onto the blower.  
Rotate the filter until secure.

## CONNECT POWER

①



Plug in and turn power on.



## AFTER POWER CONNECTION

①



Remove film from all surfaces of the rangehood.

## INSTALLER CHECKLIST

### TO BE COMPLETED BY THE INSTALLER

- Have all packaging been removed?
- Rangehood is correctly installed
- All connections are secure
- The ducting is not bent or crushed in any areas
- Check rangehood suction
- External vent is sealed appropriately
- All local regulations have been met
- Operation has been tested (refer to rangehood user guide)
- Check for unusual noises

---

### Complete and keep for safe reference:

Model \_\_\_\_\_

Serial no. \_\_\_\_\_

Purchase date \_\_\_\_\_

Purchaser \_\_\_\_\_

Dealer address \_\_\_\_\_

Installer's name \_\_\_\_\_

Installer's signature \_\_\_\_\_

Installation company \_\_\_\_\_

Installation date \_\_\_\_\_

**FISHERPAYKEL.COM**

© Fisher & Paykel Appliances 2024. All rights reserved.

The models shown in this guide may not be available in all markets  
and are subject to change at any time.

The product specifications in this guide apply to the specific products and  
models described at the date of issue. Under our policy of continuous product  
improvement, these specifications may change at any time.

For current details about model and specification availability in your country,  
please go to our website or contact your local Fisher & Paykel dealer.

**106072A 01.24**