

# FISHER & PAYKEL

## INTEGRATED INSERT RANGEHOOD WITH EXTERNAL MOTOR

---

CONTEMPORARY  
HP60IDCHEX4 & HP90IDCHEX4

INSTALLATION GUIDE

NZ AU

**⚠ WARNING!**



**Electric Shock Hazard**

**Failure to follow this advice may result in electric shock or death.**

- Installation and electrical wiring must be completed by qualified person(s) in accordance with all applicable codes and standards, including fire-rated construction.
- Always disconnect the appliance from the mains power supply before carrying out any maintenance or repairs.

**⚠ WARNING!**



**Weight Hazard**

**Failure to follow this advice may result in damage or personal injury.**

- The appliance is heavy. Please ensure adequate care is taken when installing the appliance.
- **Product weight:** 6.4kg (HP60) and 8.4kg (HP90).

**⚠ WARNING!**



**Cut Hazard**

**Failure to use caution could result in injury.**

- Take care: some edges are sharp.
- Wear gloves to protect against sharp edges.

**READ AND SAVE THESE INSTRUCTIONS**

**WARNING!**

When using this appliance always exercise basic safety precautions including the following:

**Installation**

- Please read the entire set of instructions before installing or using this appliance.
- Please make this information available to the person installing the appliance - doing so could reduce your installation costs.

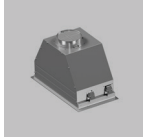
- Always switch the power off prior to installation, servicing or cleaning of the appliance.
- This appliance must be installed and connected to the mains power supply only by a suitably qualified person according to these installation instructions and in compliance with any applicable local building and electricity regulations. Failure to install the appliance correctly could invalidate any warranty or liability claims.
- To comply with electrical safety regulations, the appliance must be plugged into a socket near the appliance. The socket must be accessible, or have an accessible isolating switch, to enable the end user to isolate the appliance from the power for the purpose of internal cleaning or maintenance.
- A power outlet should be within 750 mm of the rangehood and can either be on the wall, behind the chimney or in the ceiling.
- If the supply cord of this equipment is damaged, it must only be replaced by the manufacturer, its service agent or similarly qualified person in order to avoid a hazard.
- All ducting must comply with local requirements and building codes.
- Attention should be given to ensure that any applicable regulations concerning the discharge of exhaust air are fulfilled.
- To reduce risk of fire and to properly exhaust air, be sure to duct air outside—Do not vent exhaust air into spaces within walls or ceilings or into attics, crawl spaces, or garages.
- Before connecting any pipes, consult municipal ordinances to ensure that any applicable regulations concerning the discharge of exhaust air are adhered to and request permission from the person in charge of the building.
- To reduce the risk of damage occurring to the cooktop, it is recommended that the surface of the cooktop is protected with cardboard or a similar object during installation of the rangehood.
- This unit must be earthed/grounded. Improper earthing/grounding can result in a risk of electric shock.
- When cutting or drilling into wall or ceiling, do not damage electrical wiring and other hidden utilities.
- Failure to install the screws or fixing device in accordance with these instructions may result in electrical hazards.
- Exhaust air must not be discharged into an existing flue that is used for exhausting fumes from appliances burning gas or other fuels.
- Rangehoods may affect the safe operation of appliances burning gas or other fuels (including those in other rooms) due to backflow of combustion gases. These gases can potentially result in carbon monoxide poisoning. Ensure there is adequate ventilation of the room when the rangehood is used at the same time as appliances burning gas or other fuels. After installation of a rangehood the operation of flued gas appliances should be tested by a competent person to ensure that backflow does not occur.
- In order to avoid a hazard due to inadvertent resetting of the thermal cut-out, this appliance must not be supplied through an external switching device, such as a timer, or connected to a circuit that is regularly switched on and off by the utility.
- The minimum distance between the supporting surface for the cooking vessels on the hob and the lowest part of the rangehood. (When the rangehood is located above a gas appliance, this distance shall be at least 60 cm. If the instructions for installation for the gas hob specify a greater distance, this has to be taken into account. The distance of 60 cm can be reduced for
  - non-combustible parts of rangehoods, except grease filters, and/or
  - parts operating at safety extra low voltage, provided these parts do not give access to live parts if deformed)

# COMPONENTS REQUIRED

## PARTS

- Keep all packing materials until the unit has been inspected.
- Inspect the product to ensure there is no shipping damage. If any damage is detected contact the dealer or retailer you bought the product from to report the damage.
- Fisher & Paykel is not responsible for shipping damage.

### Supplied



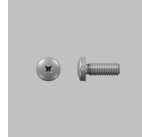
Rangehood (1)



Safety guide (1)



200mm outlet (1)



Phillips screws (4)

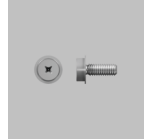
### External Motor kit



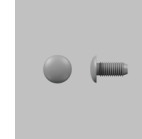
150mm Internal diameter 500mm PVC roof pipe (1)



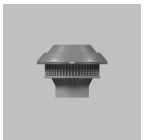
200mm diameter Flexible ducting 6m (1)\*



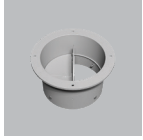
12mm Plastic self-tapping screws (4)



12mm Sheet metal screws (4)



External Blower (1)



Back draft damper assembly (1)

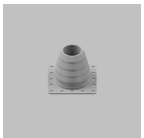


150 - 200mm diameter adaptor (1)



Metal ducting ring (2)

### Not Supplied



Roof seal kit (1)\*\*



Aluminium tape (**DO NOT** use duct tape) (1)



Support straps/brackets (1)



Zip ties and sealant (1)



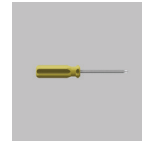
Additional 200mm flexible ducting 6m PN: 792961

\*Additional lengths can be ordered from [www.fisherpaykel.com](http://www.fisherpaykel.com)

\*\* Kit will differ based on roof type. Roofing screws not shown

## TOOLS

### Not supplied



Phillips screwdriver (1)



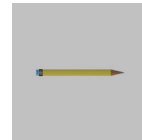
Duct tape (1)



Electric drill (1)



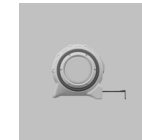
Jigsaw (1)



Pencil (1)



Ruler (1)



Tape measure (1)

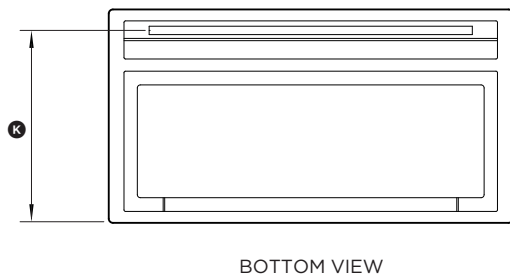
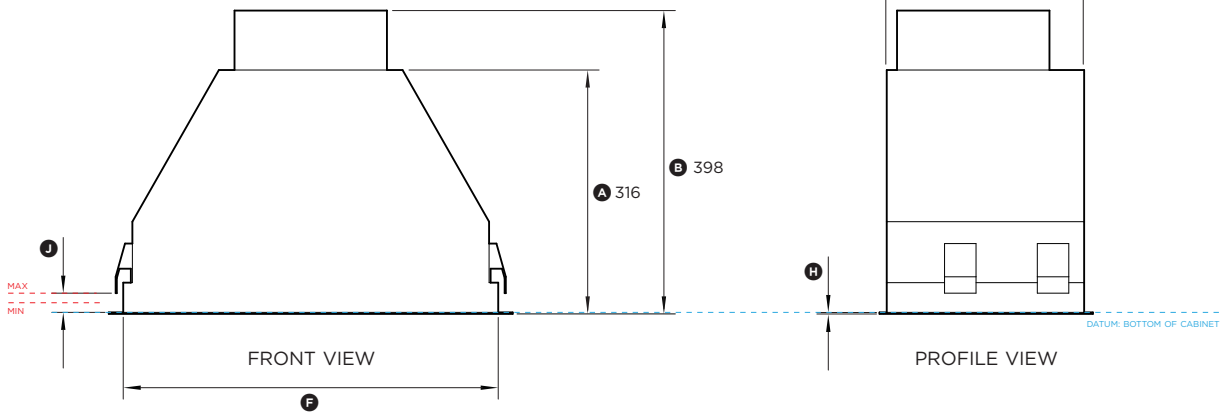
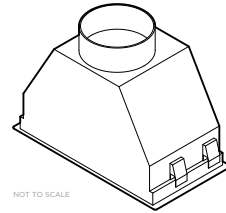
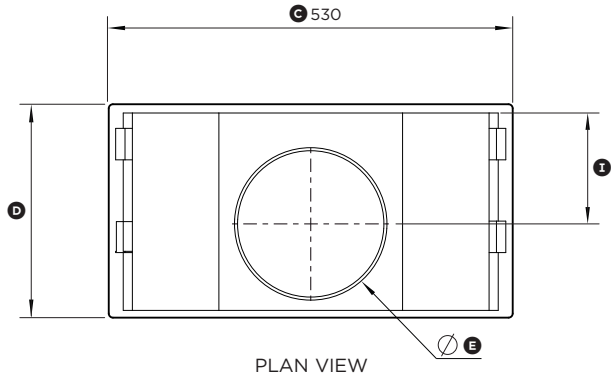


String & weight (1)



Level (1)

# PRODUCT DIMENSIONS



**Model nos:**  
HP60IDCHEX4

Product Dimensions	mm
Ⓐ Overall height of rangehood without ducting adapter	316
Ⓑ Overall height of rangehood with ducting adapter	398
Ⓒ Overall width of rangehood	530
Ⓓ Overall depth of rangehood (excl. cabinetry front panel)	280
Ⓔ Diameter of ducting adaptor	200
Ⓕ Width of rangehood chassis	492
Ⓖ Depth of rangehood chassis	258
Ⓜ Thickness of flange	2
Ⓧ Distance from ducting outlet centre to rear of chassis	146
Ⓛ Height adjustability of clip that secures cooker hood (cabinet base panel thickness)	min 15 max 40
Ⓝ Distance from rear to centre of light	253

Cavity Dimensions Standard Installation	mm
Width of cutout	500
Depth of cutout	260

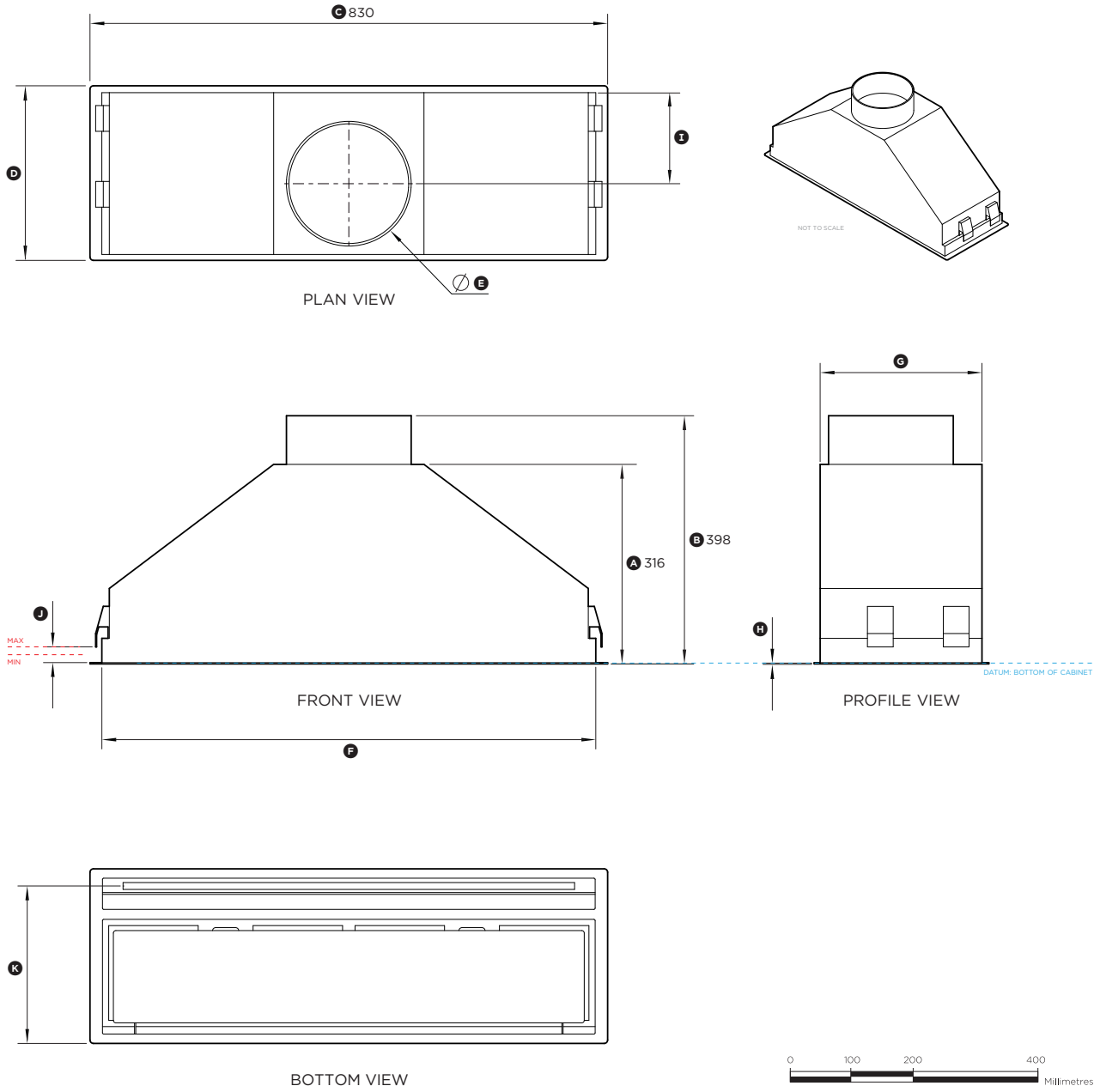
Minimum distance above cooktops	mm
Minimum height from top of cooktop to base of Rangehood	600

Note: We recommend the cabinet has a door or service panel that can be easily opened to access the power connection.

INDICATES CUTOUT -----  
INDICATES PRODUCT DATUM -----  
INDICATES CABINETS CLEARANCES -----

IMPORTANT NOTE: Throughout this guide, dimensions may vary by ±2mm (1/16"). Please read the installation guide for detailed information on installing the product. For full installation instructions & specifications visit [fisherpaykel.com](http://fisherpaykel.com)

# PRODUCT DIMENSIONS



**Model nos:**  
HP90IDCHEX4

Product Dimensions	mm
(A) Overall height of rangehood without ducting adapter	316
(B) Overall height of rangehood with ducting adapter	398
(C) Overall width of rangehood	830
(D) Overall depth of rangehood (excl. cabinetry front panel)	280
(E) Diameter of ducting adaptor	200
(F) Width of rangehood chassis	792
(H) Depth of rangehood chassis	258
(J) Thickness of flange	2
(K) Distance from ducting outlet centre to rear of chassis	157
(L) Height adjustability of clip that secures cooker hood (cabinet base panel thickness)	min 15 max 40
(M) Distance from rear to centre of light	253

Cavity Dimensions Standard Installation	mm
Width of cutout	800
Depth of cutout	260

Minimum distance above cooktops	mm
Minimum height from top of cooktop to base of Rangehood	600

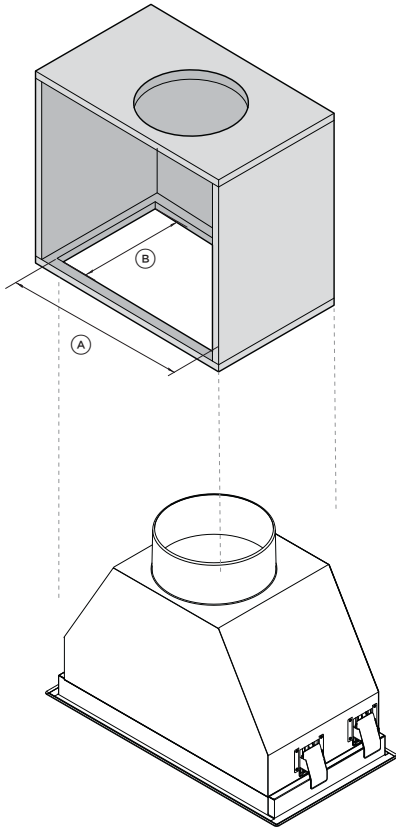
Note: We recommend the cabinet has a door or service panel that can be easily opened to access the power connection.

INDICATES CUTOUT .....  
 INDICATES PRODUCT DATUM .....  
 INDICATES CABINETY CLEARANCES .....

**IMPORTANT NOTE:** Throughout this guide, dimensions may vary by  $\pm 2\text{mm}$  (1/16"). Please read the installation guide for detailed information on installing the product. For full installation instructions & specifications visit [fisherpaykel.com](http://fisherpaykel.com)

## CUTOUT DIMENSIONS

### 60cm model



#### CUTOUT DIMENSIONS

- Ⓐ Overall width of the cutout
- Ⓑ Overall depth of the cutout

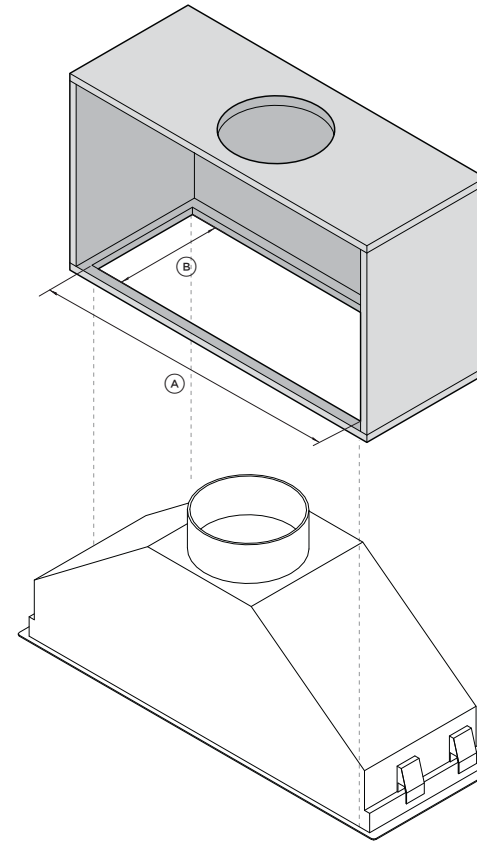
**HP60**

**MM**

500

260

### 90cm model



#### CUTOUT DIMENSIONS

- Ⓐ Overall width of the cutout
- Ⓑ Overall depth of the cutout

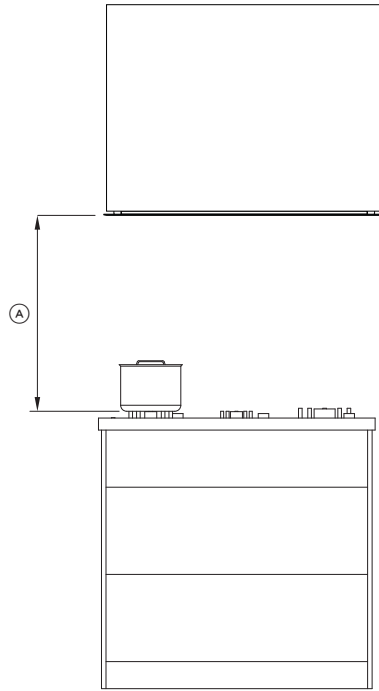
**HP90**

**MM**

800

260

## INSTALLATION HEIGHT



HEIGHT DIMENSIONS	MM
Ⓐ Height top of cooktop to base of product	min 600

This rangehood must be installed no lower than the minimum height indicated in the table above. Minimum installation height may be greater if required by the cooktop, refer to your cooktop installation instructions.

Installation at the minimum height will improve the efficiency of capturing cooking odours, grease and smoke. Installation above the minimum height is the users preference, it is not recommended to install above the maximum height indicated in the table above.

### Induction cooktop considerations

- Induction cooktops use energy efficient technology that only heats the contents of a cooking pot.
- Unlike gas or traditional electric cooktops, the surrounding air does not get heated when using an induction cooktop. As a result, rangehood filters, splashbacks and surrounding cabinetry do not get warmed up, increasing the likelihood of condensation on these cooler surfaces.
- Other factors like ambient temperature, humidity, natural ventilation of the room, size of the cookware and how the induction cooktop is being used also influence condensation. For example, aggressive boiling on high cooktop heat settings like PowerBoost increases the rate at which water is evaporated, increasing the likelihood of condensation.
- It is important to understand that neither the rangehood nor the induction cooktop are faulty as a result of this phenomenon.

### Condensation can be minimised by:

- Installing the rangehood at the maximum height above the cooktop as specified in this user guide.
- Using the rangehood on a lower speed setting when boiling.
- Using the induction cooktop on a lower heat setting when boiling.
- Switching the rangehood on 5 minutes before cooking and letting it run for at least 5 minutes after cooking. Refer to the your user guide for details of how to use the timer function.

## VENTING REQUIREMENTS

Attention should be given to ensure that any applicable regulations concerning the discharge of exhaust air are fulfilled.

This rangehood is designed to operate with a Fisher & Paykel external blower with the exhaust air ducted externally from the kitchen.

External blower rangehood installation is different from internal blower rangehood installation.

### For optimum performance of this blower:

- ① Identify roof location where blower noise will be acceptable. This will depend on the following:
  - Distance from outdoor living areas.
  - Transmission of noise through ceiling or windows located near the blower.
- ② Mount the blower 4-6m from the rangehood.
- ③ Use only the supplied Fisher & Paykel flexible ducting.
- ④ Extend ducting and cut to required length. If additional ducting is required this can be purchased from Fisher & Paykel. Refer to 'Parts and Accessories' for details.
- ⑤ Maximum recommended duct length 12m.
- ⑥ Bends in ducting should be smooth, gradual and have a radius of at least two times the duct diameter.
- ⑦ Ducting from rangehood to blower should have at least two bends. The bends in the ducting help to reduce the transmission of noise from the external blower to the rangehood.

## ELECTRICAL REQUIREMENTS

Before connecting the rangehood to the power supply, ensure the voltage and frequency indicated on the rating plate match that of the installation location:

MODEL	FREQUENCY	VOLTAGE
HP60IDCHEX4	50 Hz	164 W
HP90IDCHEX4	50 Hz	164 W



## INSTALL PREPARATION / CONSIDERATIONS

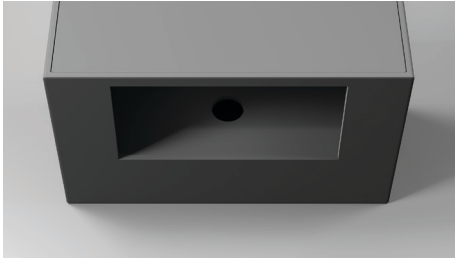
The rangehood must be installed offset from the remote motor to achieve the expected noise performance. The external motor should be 4-6m away from hood.

①



Duct to roof.

②



Ensure the cavity is set up to the correct specifications. Refer to 'cutout dimensions' for details.

③



Ensure access for power and ducting connections have been considered.

④



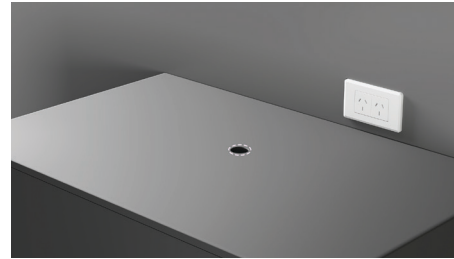
Ensure the top of the rangehood remains accessible via the cavity throughout the installation.

⑤



Refer to cooktop specifications to ensure adequate clearances are maintained.

⑥



One power outlet is required, this must be accessible to the customer.

⑦



Protect cooktop and benchtop during installation.

## CHECK DUCTING

①



Ensure the ducting is the correct length and compatible to the rangehood.

If ducting is supplied with the external motor check that it is the correct length. If needed additional ducting of the same diameter can be used.

## UNPACK PRODUCT

①



Ensure both external motor and rangehood cartons are present.

②



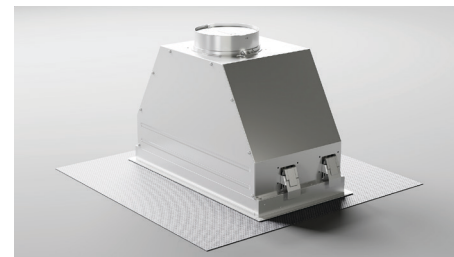
Open carton and remove all packaging. Carefully lift the products out of the cartons. Place on a protected surface.

③



Dispose of packaging responsibly. Recycle where possible.

④



Inspect product for any damage. Connect motor to hood and test.

## PREPARE MOTOR

①



Rest upside down and fit the backdraft damper using four Phillips screws.

## INSTALL EXTERNAL MOTOR

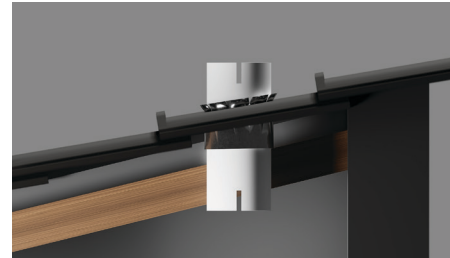
Before cutting into roof, locate studs and make hole beside the studs for securing later.

①



Create hole in roof for PVC pipe.

②



Orient PVC pipe with pre-drilled holes at the top, insert into the hole. Ensure it is installed vertically and protrudes a minimum of 50mm above the roof seal. Brace pipe against roof studs.

③



Ensure PVC pipe is vertical before securing to internal beams. Seal the pipe with appropriate roof sealing kit.

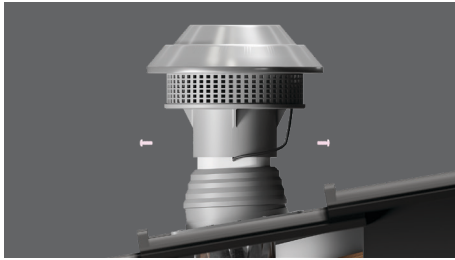
④



Route power cord through the pipe, ensuring it rests in the upper slot on the PVC pipe. Once cord is in place, lower the motor onto the pipe.

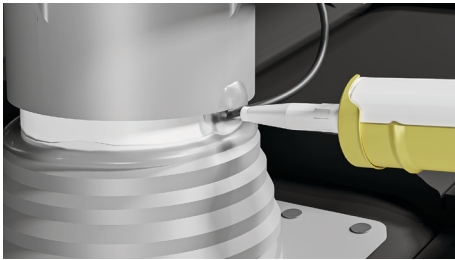
## INSTALL EXTERNAL MOTOR

5



Secure motor to the PVC pipe using four Phillips screws.

6



Seal around the power cord slot as required.

7



Route power cord through PVC pipe and the lower slot.

8



Attach the 160 - 200mm adapter onto the PVC pipe and secure.

## INSTALL DUCTING

### 200MM FLEXI DUCTING

1



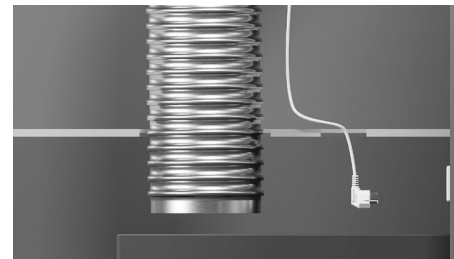
Check length.

2



Connect ducting to motor and secure using supplied clamp.

3

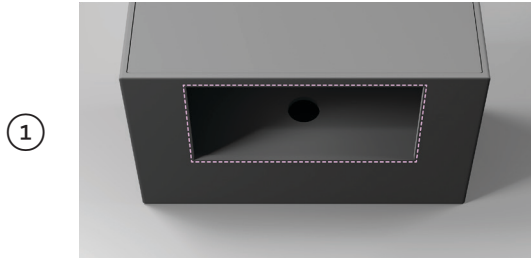


Route power cord and ducting through ceiling.

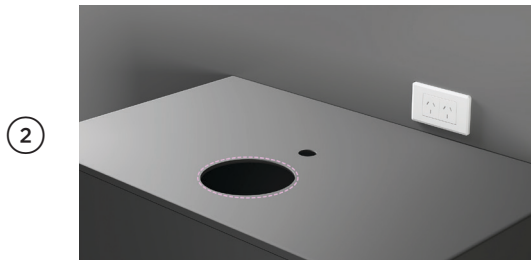
## PREPARE CABINETY

Ensure the cabinetry can support the weight of the rangehood and ducting.

### NON PRECUT CABINETY

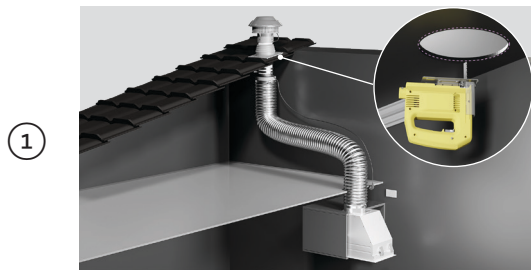


① Centre rangehood over cooktop and prepare cutout to the required specifications. Refer to dimensions and cabinetry cutout pages.



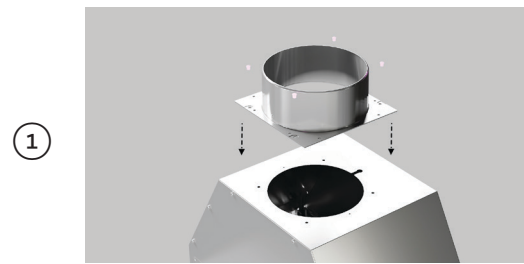
② Prepare the ducting route.

### PRE CUT CABINETY

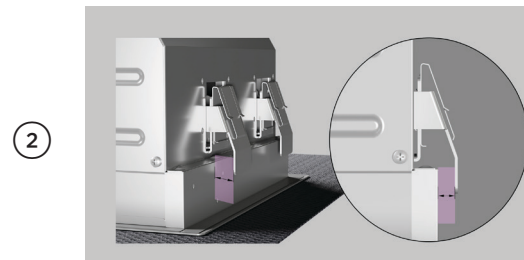


① Prepare the ducting route.

## PREPARE HOOD



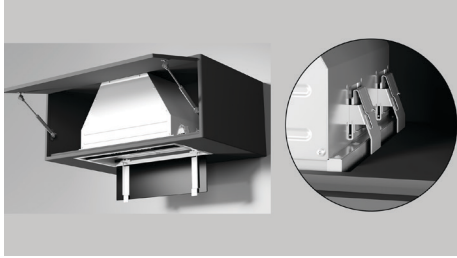
① Fit the duct adapter to the rangehood using four supplied Phillips screws.



② Ensure an air gap between the chassis and all mounting brackets\* is maintained.

## INSTALL HOOD

1



Lift rangehood into cavity until brackets rest on the cabinetry. Ensure power cord remains free and unobstructed.

2



Unclip filters to remove.

3



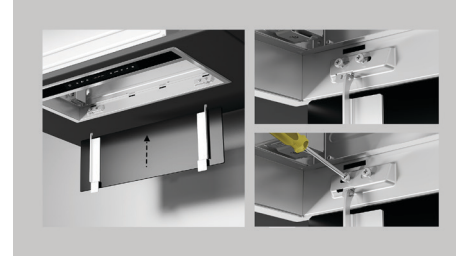
On one side of the perimeter plate, loosen the two screws shown, and slide perimeter plate out.

4



From below the rangehood, secure all four brackets using Phillips screwdriver. Ensure flange is flush against the cabinetry

5



Refit perimeter plate and secure using the screws removed in step 3.

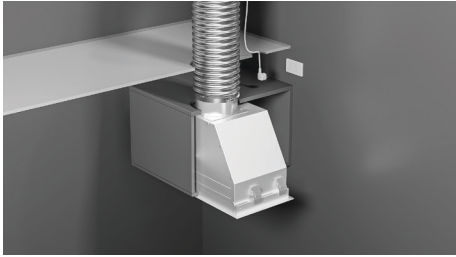
6



Ensure filters are oriented correctly before clipping back into place.

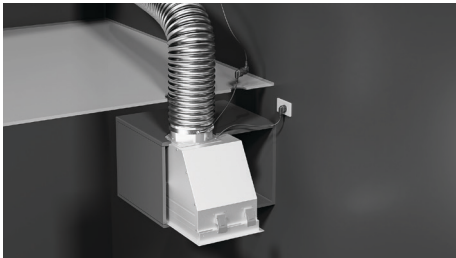
## SECURE DUCTING

①



Attach flexible ducting to rangehood duct adapter.  
Secure using tape, cable ties or metal straps as required.

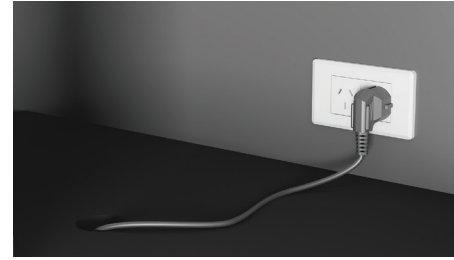
②



Connect the external motor plug to the rangehood socket.

## CONNECT POWER

①



Plug in and turn power on.

## AFTER POWER CONNECTION

①



Remove film from all surfaces of the rangehood.

## INSTALLER CHECKLIST

### TO BE COMPLETED BY THE INSTALLER

- Have all packaging been removed?
- Rangehood is correctly installed
- All connections are secure
- The ducting is not crushed or blocked in any areas
- Check rangehood suction
- All local regulations have been met
- Operation has been tested (refer to rangehood user guide)
- Check for unusual noises
- Must be mounted at least 4 - 6m away from the hood
- The ducting has at least two bends

---

### Complete and keep for safe reference:

Model \_\_\_\_\_

Serial no. \_\_\_\_\_

Purchase date \_\_\_\_\_

Purchaser \_\_\_\_\_

Dealer address \_\_\_\_\_

Installer's name \_\_\_\_\_

Installer's signature \_\_\_\_\_

Installation company \_\_\_\_\_

Installation date \_\_\_\_\_



**FISHERPAYKEL.COM**

© Fisher & Paykel Appliances 2024. All rights reserved.

The models shown in this guide may not be available in all markets  
and are subject to change at any time.

The product specifications in this guide apply to the specific products and  
models described at the date of issue. Under our policy of continuous product  
improvement, these specifications may change at any time.

For current details about model and specification availability in your country,  
please go to our website or contact your local Fisher & Paykel dealer.

**431120A 08.24**